



# HV & UHV Vacuum Products Catalogue

- ▶ COMPONENTS
- ▶ CONSUMABLES
- ▶ VALVES
- ▶ PUMPS
- ▶ GAUGES
- ▶ MANIPULATION

- ▶ MASS FLOW
- ▶ FEEDTHROUGHS
- ▶ CHAMBERS
- ▶ ASSEMBLIES
- ▶ MATERIALS
- ▶ SYSTEMS

# KF Flanges and Components

- Pipe Thread Fittings

## CONTENTS



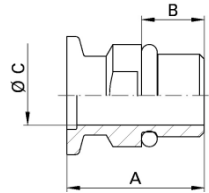
### KF Pipe Thread Fittings

Page

B15 Flanged Pipe Thread. 304L / Viton



### KF Flanged Pipe Thread | Male

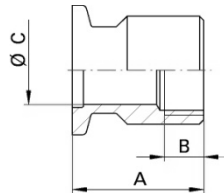


- Standard materials SS 304L / VITON Seal
- Temperature range: Male -15 to 150°C. Female -195 to 300°C
- Full range of centering rings, O-rings and clamps in-stock

| NW   | A dimension | B dimension | C dimension | Thread | Part Code      |
|------|-------------|-------------|-------------|--------|----------------|
| KF10 | 35.0        | 16.0        | 10.0        | G3/8"  | <b>KF10TPM</b> |
| KF16 | 35.0        | 16.0        | 15.0        | G1/2"  | <b>KF16TPM</b> |
| KF25 | 45.0        | 24.0        | 24.0        | G1.0"  | <b>KF25TPM</b> |
| KF40 | 50.0        | 28.0        | 40.0        | G1.5"  | <b>KF40TPM</b> |

all dimensions are measured in millimetres (mm) unless otherwise stated

### KF Flanged Pipe Thread | Female



| NW   | A dimension | B dimension | C dimension | Thread | Part Code      |
|------|-------------|-------------|-------------|--------|----------------|
| KF10 | 30.0        | 15.0        | 10.0        | G3/8"  | <b>KF10TPF</b> |
| KF16 | 30.0        | 9.0         | 16.0        | G1/2"  | <b>KF16TPF</b> |
| KF25 | 30.0        | 12.0        | 24.0        | G3/4"  | <b>KF25TPF</b> |
| KF40 | 30.0        | 16.0        | 28.0        | G1.0"  | <b>KF40TPF</b> |

all dimensions are measured in millimetres (mm) unless otherwise stated

### Centering Rings & O-rings and Clamps

| NW   | Type      | Part Code        |
|------|-----------|------------------|
| KF10 | SS/VITON* | <b>KF10CRVSS</b> |
| KF16 | SS/VITON* | <b>KF16CRVSS</b> |
| KF25 | SS/VITON* | <b>KF25CRVSS</b> |
| KF40 | SS/VITON* | <b>KF40CRVSS</b> |

\*Fluorocarbon (temp range -15 to 150°C). Other Centering/O-ring materials available

|          |           |                |
|----------|-----------|----------------|
| KF16(10) | Aluminium | <b>KF16CAL</b> |
| KF25     | Aluminium | <b>KF25CAL</b> |
| KF40(32) | Aluminium | <b>KF40CAL</b> |

other clamp materials and styles available



Contact us...



k-tech supplies ltd  
wild thyme  
udimore road  
broadland row  
broad oak  
rye  
east sussex  
tn31 6bx  
united kingdom

web : [www.ktechsupplies.co.uk](http://www.ktechsupplies.co.uk)  
email : [enquiries@ktechsupplies.co.uk](mailto:enquiries@ktechsupplies.co.uk)  
tel : +44 (0)1424 400 235  
fax : +44 (0)7006 044 223