



HV & UHV Vacuum Products Catalogue

- ▶ **COMPONENTS**
- ▶ **CONSUMABLES**
- ▶ VALVES
- ▶ PUMPS
- ▶ GAUGES
- ▶ MANIPULATION

- ▶ MASS FLOW
- ▶ FEEDTHROUGHS
- ▶ CHAMBERS
- ▶ ASSEMBLIES
- ▶ MATERIALS
- ▶ SYSTEMS

KF Flanges and Components

- **KF to Fittings Adaptors**

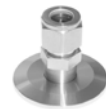
CONTENTS



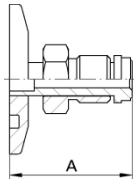
KF to Fittings Adaptors

Page

B23	KF to VCR Adaptors. 304L
B24	KF to NPT Adaptors. 304L
B25	KF to Swagelok Adaptors. 304L
B26	KF to Ultra-Torr Adaptors. 316



KF Flanged VCR Adaptors | Male



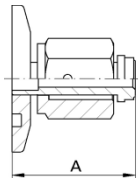
- Standard materials SS 304L
- Temperature range: -195 to 300°C
- Full range of centering rings, O-rings and clamps in-stock



NW	A dimension	VCR conn	Part Code
KF16	36.0	1/4"	KF16VCR1/4M
KF16	41.0	1/2"	KF16VCR1/2M
KF25	33.0	1/4"	KF25VCR1/4M
KF25	37.0	1/2"	KF25VCR1/2M
KF40	33.0	1/4"	KF40VCR1/4M
KF40	37.0	1/2"	KF40VCR1/2M

all dimensions are measured in millimetres (mm) unless otherwise stated

KF Flanged VCR Adaptors | Female



NW	A dimension	VCR conn	Part Code
KF16	36.0	1/4"	KF16VCR1/4F
KF16	41.0	1/2"	KF16VCR1/2F
KF25	33.0	1/4"	KF25VCR1/4F
KF25	37.0	1/2"	KF25VCR1/2F

all dimensions are measured in millimetres (mm) unless otherwise stated

Centering Rings & O-rings and Clamps

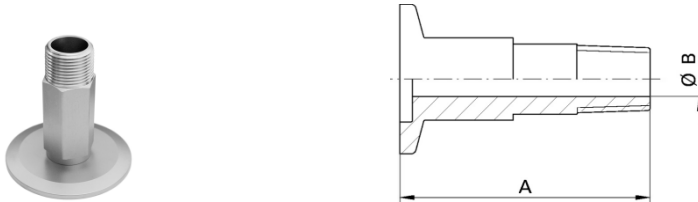
NW	Type	Part Code
KF16	SS/VITON*	KF16CRVSS
KF25	SS/VITON*	KF25CRVSS
KF40	SS/VITON*	KF40CRVSS

*Fluorocarbon (temp range -15 to 150°C). Other Centering/O-ring materials available

KF16(10)	Aluminium	KF16CAL
KF25	Aluminium	KF25CAL
KF40(32)	Aluminium	KF40CAL

other clamp materials and styles available

KF Flanged NPT Adaptors | Male



- Standard materials SS 304L
- Temperature range: -195 to 300°C
- Full range of centering rings, O-rings and clamps in-stock

NW	A dimension	B dimension	Thread	Part Code
KF16	50.0	7.1	1/4"	KF16NPT1/4M
KF25	50.0	7.1	1/2"	KF25NPT1/4M
KF25	75.0	11.9	1/4"	KF25NPT1/2M

all dimensions are measured in millimetres (mm) unless otherwise stated

KF Flanged NPT Adaptors | Female



NW	A dimension	Thread	Part Code
KF16	19.0	1/8"	KF16NPT1/8F
KF16	19.0	1/4"	KF16NPT1/4F
KF25	19.0	1/8"	KF25NPT1/8F
KF25	19.0	1/4"	KF25NPT1/4F

all dimensions are measured in millimetres (mm) unless otherwise stated

Centering Rings & O-rings and Clamps

NW	Type	Part Code
KF16	SS/VITON*	KF16CRVSS
KF25	SS/VITON*	KF25CRVSS

*Fluorocarbon (temp range -15 to 150°C). Other Centering/O-ring materials available

KF16(10)	Aluminium	KF16CAL
KF25	Aluminium	KF25CAL

other clamp materials and styles available

KF Flanged Swagelok Adaptors



- Standard materials SS 304L
- Temperature range: -195 to 300°C
- Full range of centering rings, O-rings and clamps in-stock

NW	A dimension	METRIC DIA	Part Code
KF16	40.0	6mm	KF16SWAG6
KF16	41.0	8mm	KF16SWAG8
KF25	38.0	6mm	KF25SWAG6
KF25	379.0	8mm	KF25SWAG8
KF25	41.0	10mm	KF25SWAG10
KF25	43.0	12mm	KF25SWAG12
KF40	38.0	6mm	KF40SWAG6

all dimensions are measured in millimetres (mm) unless otherwise stated

NW	A dimension	IMPERIAL DIA	Part Code
KF16	40.0	1/4"	KF16SWAG1/4
KF16	53.0	1/2"	KF16SWAG1/3
KF25	38.0	1/4"	KF25SWAG1/4
KF25	53.0	1/2"	KF25SWAG1/2
KF40	38.0	1/4"	KF40SWAG1/4

all dimensions are measured in millimetres (mm) unless otherwise stated

Centering Rings & O-rings and Clamps

NW	Type	Part Code
KF16	SS/VITON*	KF16CRVSS
KF25	SS/VITON*	KF25CRVSS
KF40	SS/VITON*	KF40CRVSS

*Fluorocarbon (temp range -15 to 150°C). Other Centering/O-ring materials available

KF16(10)	Aluminium	KF16CAL
KF25	Aluminium	KF25CAL
KF40(32)	Aluminium	KF40CAL

other clamp materials and styles available

KF Flanged Ultra-Torr Adaptors



- Standard materials SS 316
- Fluorocarbon O-ring
- Temperature range: -195 to 300°C
- Full range of centering rings, O-rings and clamps in-stock

NW	Ultra-Torr	Length	Part Code
KF10	1/8"	38.0	KF10-012UT
KF10	1/4"	38.0	KF10-025UT
KF16	1/8"	38.0	KF16-012UT
KF16	1/4"	38.0	KF16-025UT
KF16	1/2"	45.0	KF16-050UT
KF25	1/8"	38.0	KF25-012UT
KF25	1/4"	38.0	KF25-025UT
KF25	1/2"	45.0	KF25-050UT
KF25	3/4"	45.0	KF25-075UT
KF25	1.0"	50.0	KF25-100UT
KF40	1/8"	38.0	KF40-012UT
KF40	1/4"	38.0	KF40-025UT
KF40	1/2"	45.0	KF40-050UT
KF40	3/4"	45.0	KF40-075UT
KF40	1.0"	50.0	KF40-100UT
KF40	1.5"	50.0	KF40-150UT
KF50	1/8"	38.0	KF50-012UT
KF50	1/4"	38.0	KF50-025UT
KF50	1/2"	45.0	KF50-050UT
KF50	3/4"	45.0	KF50-075UT
KF50	1.0"	50.0	KF50-100UT
KF50	1.5"	50.0	KF50-150UT

all dimensions are measured in millimetres (mm) unless otherwise stated

Centering Rings & O-rings and Clamps

NW	Type	Part Code
KF10	SS/VITON*	KF10CRVSS
KF16	SS/VITON*	KF16CRVSS
KF25	SS/VITON*	KF25CRVSS
KF40	SS/VITON*	KF40CRVSS
KF50	SS/VITON*	KF50CRVSS

*Fluorocarbon (temp range -15 to 150°C). Other Centering/O-ring materials available

KF16(10)	Aluminium	KF16CAL
KF25	Aluminium	KF25CAL
KF40(32)	Aluminium	KF40CAL
KF50	Aluminium	KF50CAL

other clamp materials and styles available



Contact us...



k-tech supplies ltd
wild thyme
udimore road
broadland row
broad oak
rye
east sussex
tn31 6bx
united kingdom

web : www.ktechsupplies.co.uk
email : enquiries@ktechsupplies.co.uk
tel : +44 (0)1424 400 235
fax : +44 (0)7006 044 223