



HV & UHV Vacuum Products Catalogue

- ▶ COMPONENTS
- ▶ CONSUMABLES
- ▶ VALVES
- ▶ PUMPS
- ▶ GAUGES
- ▶ MANIPULATION

- ▶ MASS FLOW
- ▶ FEEDTHROUGHS
- ▶ CHAMBERS
- ▶ ASSEMBLIES
- ▶ MATERIALS
- ▶ SYSTEMS

ISO Flanges and Components

- Flanges

CONTENTS



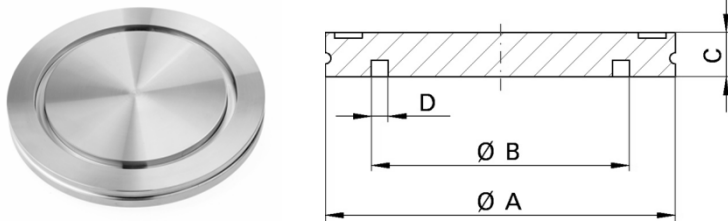
ISO Flanges

Page

| | |
|----|--------------------|
| C1 | ISO-K. Blank. 304L |
| C2 | ISO-K. Bored. 304L |
| C3 | ISO-F. Blank. 304L |
| C4 | ISO-F. Bored. 304L |



ISO-K Blank Flanges



- Standard material SS 304L ...also available in 316L and Al
- Temperature range: -195 to 300°C ...200°C; Al. 350°C; 316L
- Full range of centering rings, O-rings and clamps in-stock

| NW | A dimension | B dimension | C dimension | D dimension | Part Code |
|----------|-------------|-------------|-------------|-------------|-----------|
| ISO63-K | 95.0 | 70.0 | 12.0 | 4.5 | ISO63KBL |
| ISO80-K | 110.0 | 83.0 | 12.0 | 4.5 | ISO80KBL |
| ISO100-K | 130.0 | 102.0 | 12.0 | 4.5 | ISO100KBL |
| ISO160-K | 180.0 | 153.0 | 12.0 | 4.5 | ISO160KBL |
| ISO200-K | 240.0 | 213.0 | 12.0 | 4.5 | ISO200KBL |
| ISO250-K | 290.0 | 261.0 | 12.0 | 4.5 | ISO250KBL |
| ISO320-K | 370.0 | 318.0 | 17.0 | 4.5 | ISO320KBL |
| ISO400-K | 450.0 | 400.0 | 17.0 | 4.5 | ISO400KBL |
| ISO500-K | 550.0 | 501.0 | 17.0 | 4.5 | ISO500KBL |
| ISO630-K | 690.0 | 651.0 | 22.0 | 4.5 | ISO630KBL |

all dimensions are measured in millimetres (mm) unless otherwise stated

Centering Rings & O-rings and Clamps

| NW | Type | Part Code |
|--------|-------------------------|--------------|
| ISO63 | SS/VITON* | ISO63CRVSS |
| ISO80 | SS/VITON* | ISO80CRVSS |
| ISO100 | SS/VITON* | ISO100CRVSS |
| ISO160 | SS/VITON* | ISO160CRVSS |
| ISO200 | SS/VITON* | ISO200CRVSS |
| ISO250 | SS/VITON* | ISO250CVRSS |
| ISO320 | SS/VITON* +Al Trapped** | ISO320TCRVSS |
| ISO400 | SS/VITON* +Al Trapped** | ISO400TCRVSS |
| ISO500 | SS/VITON* +Al Trapped** | ISO500TCRVSS |
| ISO630 | SS/VITON* +Al Trapped** | ISO630TCRVSS |

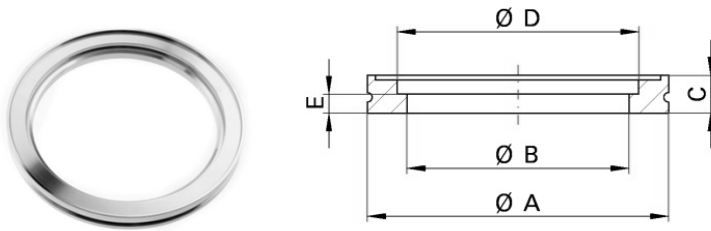
*Fluorocarbon (temp range -15 to 150°C). Other Centering/O-ring materials available

**Trapped Centering Rings recommended for use with ISO320-K and above

| | | |
|--------------|-----------|-----------------|
| ISO63-100-K | Aluminium | ISO63/100DCCAL |
| ISO160-250-K | Aluminium | ISO160/250DCCAL |
| ISO320-500-K | Aluminium | ISO320/500DCCAL |
| ISO630-K | Aluminium | ISO630DCCAL |

other clamp materials and styles available

ISO-K Bored Flanges



- Standard material SS 304L ...also available in 316L and Al
- Temperature range: -195 to 300°C ...200°C; Al. 350°C; 316L
- Full range of centering rings, O-rings and clamps in-stock

| NW | A dim | B dim | C dim | D dim | E dim | Part Code |
|----------|-------|-------|-------|-------|-------|--------------|
| ISO63-K | 95.0 | 63.8 | 12.0 | 70.0 | 6.0 | ISO63K63BO |
| ISO63-K | 95.0 | 70.3 | 12.0 | 70.0 | 6.0 | ISO63K70BO |
| ISO80-K | 110.0 | 76.4 | 12.0 | 83.0 | 6.0 | ISO80K76BO |
| ISO100-K | 130.0 | 101.9 | 12.0 | 102.0 | 6.0 | ISO100K102BO |
| ISO100-K | 130.0 | 108.3 | 12.0 | 102.0 | 6.0 | ISO100K108BO |
| ISO160-K | 180.0 | 152.7 | 12.0 | 153.0 | 6.0 | ISO160K152BO |
| ISO160-K | 180.0 | 159.3 | 12.0 | 153.0 | 6.0 | ISO160K159BO |
| ISO200-K | 240.0 | 203.6 | 12.0 | 213.0 | 6.0 | ISO200K203BO |
| ISO200-K | 240.0 | 219.4 | 12.0 | 213.0 | 6.0 | ISO200K219BO |
| ISO250-K | 290.0 | 254.4 | 12.0 | 261.0 | 6.0 | ISO250K254BO |
| ISO250-K | 290.0 | 267.4 | 12.0 | 261.0 | 6.0 | ISO250K267BO |
| ISO320-K | 370.0 | 324.4 | 17.0 | 318.0 | 8.0 | ISO320K324BO |
| ISO400-K | 450.0 | 406.5 | 17.0 | 400.0 | 8.0 | ISO400K406BO |
| ISO500-K | 550.0 | 508.5 | 17.0 | 501.0 | 8.0 | ISO500K508BO |
| ISO630-K | 690.0 | 660.5 | 22.0 | 651.0 | 12.0 | ISO630K660BO |

all dimensions are measured in millimetres (mm) unless otherwise stated

Centering Rings & O-rings and Clamps

| NW | Type | Part Code |
|--------|-------------------------|--------------|
| ISO63 | SS/VITON* | ISO63CRVSS |
| ISO80 | SS/VITON* | ISO80CRVSS |
| ISO100 | SS/VITON* | ISO100CRVSS |
| ISO160 | SS/VITON* | ISO160CRVSS |
| ISO200 | SS/VITON* | ISO200CRVSS |
| ISO250 | SS/VITON* | ISO250CRVSS |
| ISO320 | SS/VITON* +Al Trapped** | ISO320TCRVSS |
| ISO400 | SS/VITON* +Al Trapped** | ISO400TCRVSS |
| ISO500 | SS/VITON* +Al Trapped** | ISO500TCRVSS |
| ISO630 | SS/VITON* +Al Trapped** | ISO630TCRVSS |

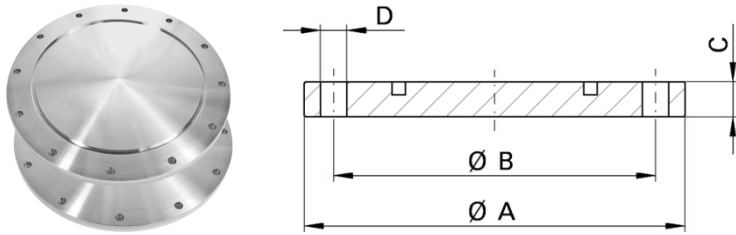
*Fluorocarbon (temp range -15 to 150°C). Other Centering/O-ring materials available

**Trapped Centering Rings recommended for use with ISO320-K and above

| | | |
|--------------|-----------|-----------------|
| ISO63-100-K | Aluminium | ISO63/100DCCAL |
| ISO160-250-K | Aluminium | ISO160/250DCCAL |
| ISO320-500-K | Aluminium | ISO320/500DCCAL |
| ISO630-K | Aluminium | ISO630DCCAL |

other clamp materials and styles available

ISO-F Blank Flanges



- Standard material SS 304L ...also available in 316L and Al
- Temperature range: -195 to 300°C ...200°C; Al. 350°C; 316L
- Full range of centering rings, O-rings and bolt kits in-stock

| NW | A dimension | B dimension | C dimension | D dimension | Part Code |
|----------|-------------|-------------|-------------|-------------|-----------|
| ISO63-F | 130.0 | 110.0 | 12.0 | 9.0 | ISO63FBL |
| ISO80-F | 145.0 | 125.0 | 12.0 | 9.0 | ISO80FBL |
| ISO100-F | 165.0 | 145.0 | 12.0 | 9.0 | ISO100FBL |
| ISO160-F | 225.5 | 200.0 | 16.0 | 11.0 | ISO160FBL |
| ISO200-F | 285.0 | 260.0 | 16.0 | 11.0 | ISO200FBL |
| ISO250-F | 335.0 | 310.0 | 16.0 | 11.0 | ISO250FBL |
| ISO320-F | 425.0 | 395.0 | 20.0 | 14.0 | ISO320FBL |
| ISO400-F | 510.0 | 480.0 | 20.0 | 14.0 | ISO400FBL |
| ISO500-F | 610.0 | 580.0 | 20.0 | 14.0 | ISO500FBL |
| ISO630-F | 750.0 | 720.0 | 22.0 | 14.0 | ISO630FBL |

all dimensions are measured in millimetres (mm) unless otherwise stated

Centering Rings & O-rings and Bolt Kits

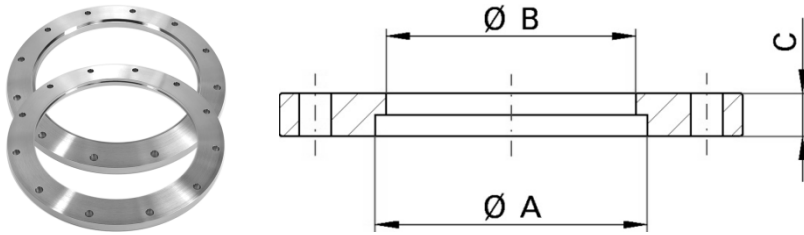
| NW | Type | Part Code |
|--------|-------------------------|--------------|
| ISO63 | SS/VITON* | ISO63CRVSS |
| ISO80 | SS/VITON* | ISO80CRVSS |
| ISO100 | SS/VITON* | ISO100CRVSS |
| ISO160 | SS/VITON* | ISO160CRVSS |
| ISO200 | SS/VITON* | ISO200CRVSS |
| ISO250 | SS/VITON* | ISO250CRVSS |
| ISO320 | SS/VITON* +Al Trapped** | ISO320TCRVSS |
| ISO400 | SS/VITON* +Al Trapped** | ISO400TCRVSS |
| ISO500 | SS/VITON* +Al Trapped** | ISO500TCRVSS |
| ISO630 | SS/VITON* +Al Trapped** | ISO630TCRVSS |

*Fluorocarbon (temp range -15 to 150°C). Other Centering/O-ring materials available

**Trapped Centering Rings recommended for use with ISO320-F and above

| | | |
|--------------|---------------------|-----------------|
| ISO63-F | SS (M8 pack of 4) | ISO63FBOLT |
| ISO80-100-F | SS (M8 pack of 8) | ISO80/100FBOLT |
| ISO160-F | SS (M10 pack of 8) | ISO160FBOLT |
| ISO200-250-F | SS (M10 pack of 12) | ISO200/250FBOLT |
| ISO320-F | SS (M12 pack of 12) | ISO320FBOLT |
| ISO400-500-F | SS (M12 pack of 16) | ISO400/500FBOLT |
| ISO630-F | SS (M12 pack of 20) | ISO630FBOLT |

ISO-F Bored Flanges



- Standard material SS 304L ...also available in 316L and Al
- Temperature range: -195 to 300°C ...200°C; Al. 350°C; 316L
- Full range of centering rings, O-rings and bolt kits in-stock

| NW | A dimension | B dimension | C dimension | D dimension | Part Code |
|----------|-------------|-------------|-------------|-------------|--------------|
| ISO63-F | 76.4 | 73.0 | 12.0 | 9.0 | ISO63F76BO |
| ISO80-F | 89.1 | 86.0 | 12.0 | 9.0 | ISO80F89BO |
| ISO100-F | 108.2 | 105.0 | 12.0 | 9.0 | ISO100F108BO |
| ISO160-F | 159.5 | 156.0 | 16.0 | 11.0 | ISO160F159BO |
| ISO200-F | 219.4 | 216.0 | 16.0 | 11.0 | ISO200F219BO |
| ISO250-F | 267.4 | 264.0 | 16.0 | 11.0 | ISO250F267BO |
| ISO320-F | 324.6 | 320.0 | 20.0 | 14.0 | ISO320F324BO |
| ISO400-F | 406.4 | 401.0 | 20.0 | 14.0 | ISO400F406BO |
| ISO500-F | 508.5 | 503.0 | 20.0 | 14.0 | ISO500F508BO |
| ISO630-F | 660.4 | 655.0 | 22.0 | 14.0 | ISO630F660BO |

all dimensions are measured in millimetres (mm) unless otherwise stated

Centering Rings & O-rings and Bolt Kits

| NW | Type | Part Code |
|--------|-------------------------|--------------|
| ISO63 | SS/VITON* | ISO63CRVSS |
| ISO80 | SS/VITON* | ISO80CRVSS |
| ISO100 | SS/VITON* | ISO100CRVSS |
| ISO160 | SS/VITON* | ISO160CRVSS |
| ISO200 | SS/VITON* | ISO200CRVSS |
| ISO250 | SS/VITON* | ISO250CRVSS |
| ISO320 | SS/VITON* +Al Trapped** | ISO320TCRVSS |
| ISO400 | SS/VITON* +Al Trapped** | ISO400TCRVSS |
| ISO500 | SS/VITON* +Al Trapped** | ISO500TCRVSS |
| ISO630 | SS/VITON* +Al Trapped** | ISO630TCRVSS |

*Fluorocarbon (temp range -15 to 150°C). Other Centering/O-ring materials available

**Trapped Centering Rings recommended for use with ISO320-F and above

| | | |
|--------------|---------------------|-----------------|
| ISO63-F | SS (M8 pack of 4) | ISO63FBOLT |
| ISO80-100-F | SS (M8 pack of 8) | ISO80/100FBOLT |
| ISO160-F | SS (M10 pack of 8) | ISO160FBOLT |
| ISO200-250-F | SS (M10 pack of 12) | ISO200/250FBOLT |
| ISO320-F | SS (M12 pack of 12) | ISO320FBOLT |
| ISO400-500-F | SS (M12 pack of 16) | ISO400/500FBOLT |
| ISO630-F | SS (M12 pack of 20) | ISO630FBOLT |



Contact us...



k-tech supplies ltd
wild thyme
udimore road
broadland row
broad oak
rye
east sussex
tn31 6bx
united kingdom

web : www.ktechsupplies.co.uk
email : enquiries@ktechsupplies.co.uk
tel : +44 (0)1424 400 235
fax : +44 (0)7006 044 223