



HV & UHV Vacuum Products Catalogue

- ▶ **COMPONENTS**
- ▶ **CONSUMABLES**
- ▶ VALVES
- ▶ PUMPS
- ▶ GAUGES
- ▶ MANIPULATION

- ▶ MASS FLOW
- ▶ FEEDTHROUGHS
- ▶ CHAMBERS
- ▶ ASSEMBLIES
- ▶ MATERIALS
- ▶ SYSTEMS

CF Flanges and Components

- Cubes



CF Cubes

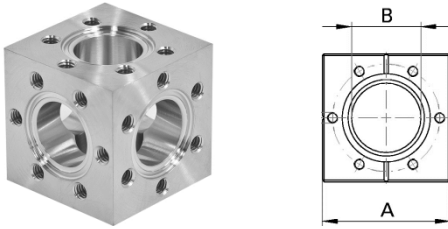
Page

A45 6-Way Cube. Metric Tapped. 304L

CONTENTS



CF Cube | Metric Tapped Holes | SS 304L



- Standard material: SS 304L
- Also available in SS 316LN and Aluminium
- 6-Way Fixed. Blind metric tapped holes
- Other flange size and combinations fabricated by request
- Use metric stud bolt sets for cubes
- Pressure range 1×10^{-9} mbar
- Temperature range: -195 to 300°C
- Full range of gaskets and bolt sets available in stock

SIZE	OD	A dim	B dim	Holes	Thread	Part Code
CF16	1.33"	35.0	16.0	6	M4	CF16CUBE
CF35	2.75"	70.0	34.8	6	M6	CF35CUBE
CF63	4.50"	114.0	60.0	8	M8	CF63CUBE
CF100	6.00"	155.0	97.0	16	M8	CF100CUBE
CF150	8.00"	208.0	148.0	20	M8	CF150CUBE
CF200	10.00"	254.0	190.5	24	M8	CF200CUBE

all dimensions are measured in millimetres (mm) unless otherwise stated

OFHC Copper Gaskets

SIZE	Material	Pack	Part Code
CF16	OFHC	10	CF16GCU
CF35	OFHC	10	CF35GCU
CF63	OFHC	10	CF63GCU
CF100	OFHC	10	CF100GCU
CF150	OFHC	10	CF150GCU
CF200	OFHC	10	CF200GCU

other gasket materials incl. annealed and plated also available

Metric Stud Bolt Sets

SIZE	Material	Pack	Part Code
CF16	SS	25	M4X16STUD
CF35	SS	25	M6X35STUD
CF63	SS	25	M7X63STUD
CF100	SS	25	M8X100STUD
CF150	SS	25	M8X150STUD
CF200	SS	25	M8X200STUD

sets comprise bolts and washers



Contact us...



k-tech supplies ltd
wild thyme
udimore road
broadland row
broad oak
rye
east sussex
tn31 6bx
united kingdom

web : www.ktechsupplies.co.uk
email : enquiries@ktechsupplies.co.uk
tel : +44 (0)1424 400 235
fax : +44 (0)7006 044 223