



HV & UHV Vacuum Products Catalogue

- ▶ COMPONENTS
- ▶ CONSUMABLES
- ▶ VALVES
- ▶ PUMPS
- ▶ GAUGES
- ▶ MANIPULATION

- ▶ MASS FLOW
- ▶ FEEDTHROUGHS
- ▶ CHAMBERS
- ▶ ASSEMBLIES
- ▶ MATERIALS
- ▶ SYSTEMS

KF Flanges and Components

- Nipples



KF Nipples

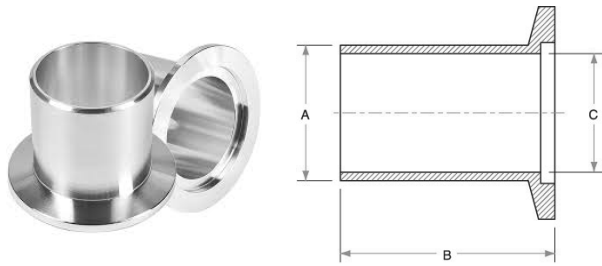
Page

B5 Half Nipple. 304L
B6 Full Nipple. 304L

CONTENTS



KF Half Nipples | Straight Tubulations



- Standard material SS 304L ...also available in SS 316L, Al and Brass
- Temperature range: -195 to 300°C ...200°C; Al. 350°C; 316L
- Custom lengths manufactured by request
- Full range of centering rings, O-rings and clamps in-stock

NW	A dimension	B dimension	C dimension	Wall	Part Code
KF10	14.0	30.0	10.0	2.0	KF10X30HN
KF10	14.0	70.0	10.0	2.0	KF10X70HN
KF16	20.0	30.0	16.0	2.0	KF16X30HN
KF16	20.0	70.0	16.0	2.0	KF16X70HN
KF25	28.0	30.0	24.0	2.0	KF25X30HN
KF25	28.0	70.0	24.0	2.0	KF25X70HN
KF32	38.0	25.0	32.0	3.0	KF32X25HN
KF32	38.0	47.0	32.0	3.0	KF32X47HN
KF40	44.5	30.0	40.5	2.0	KF40X30HN
KF40	44.5	70.0	40.5	2.0	KF40X70HN
KF50	57.0	30.0	51.0	3.0	KF50X30HN
KF50	57.0	70.0	51.0	3.0	KF50X70HN

all dimensions are measured in millimetres (mm) unless otherwise stated

Centering Rings & O-rings and Clamps

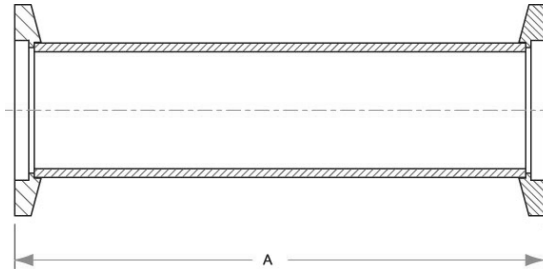
NW	Type	Part Code
KF16/10 adaptive	SS/VITON*	KF1610CRVSS
KF10	SS/VITON*	KF10CRVSS
KF16	SS/VITON*	KF16CRVSS
KF25	SS/VITON*	KF25CRVSS
KF32	SS/VITON*	KF32CRVSS
KF40	SS/VITON*	KF40CRVSS
KF50	SS/VITON*	KF50CRVSS

*Fluorocarbon (temp range -15 to 150°C). Other Centering/O-ring materials available

KF16(10)	Aluminium	KF16CAL
KF25	Aluminium	KF25CAL
KF40(32)	Aluminium	KF40CAL
KF50	Aluminium	KF50CAL

other clamp materials and styles available

KF Full Nipples | Straight Tubulations



- Standard material SS 304L ...also available in SS 316L and Al
- Temperature range: -195 to 300°C ...200°C; Al. 350°C; 316L
- Custom lengths manufactured by request
- Full range of centering rings, O-rings and clamps in-stock

NW	OD dimension	A dimension	ID dimension	Wall	Part Code
KF10	14.0	60.0	10.0	2.0	KF10X60FN
KF16	20.0	70.0	16.0	2.0	KF16X70FN
KF16	20.0	80.0	16.0	2.0	KF16X80FN
KF16	20.0	320.0	16.0	2.0	KF16X320FN
KF25	28.0	100.0	24.0	2.0	KF25X100FN
KF25	28.0	320.0	24.0	2.0	KF25X320FN
KF40	44.5	130.0	40.5	2.0	KF40X130FN
KF40	44.5	140.0	40.5	2.0	KF40X140FN
KF40	44.5	320.0	40.5	2.0	KF40X320FN
KF50	57.0	140.0	51.0	3.0	KF50X140FN
KF50	57.0	320.0	51.0	3.0	KF50X320FN

all dimensions are measured in millimetres (mm) unless otherwise stated

Centering Rings & O-rings and Clamps

NW	Type	Part Code
KF16/10 adaptive	SS/VITON*	KF1610CRVSS
KF10	SS/VITON*	KF10CRVSS
KF16	SS/VITON*	KF16CRVSS
KF25	SS/VITON*	KF25CRVSS
KF32	SS/VITON*	KF32CRVSS
KF40	SS/VITON*	KF40CRVSS
KF50	SS/VITON*	KF50CRVSS

*Fluorocarbon (temp range -15 to 150°C). Other Centering/O-ring materials available

KF16(10)	Aluminium	KF16CAL
KF25	Aluminium	KF25CAL
KF40(32)	Aluminium	KF40CAL
KF50	Aluminium	KF50CAL

other clamp materials and styles available



Contact us...



k-tech supplies ltd
wild thyme
udimore road
broadland row
broad oak
rye
east sussex
tn31 6bx
united kingdom

web : www.ktechsupplies.co.uk
email : enquiries@ktechsupplies.co.uk
tel : +44 (0)1424 400 235
fax : +44 (0)7006 044 223