



# HV & UHV Vacuum Products Catalogue

- ▶ COMPONENTS
- ▶ CONSUMABLES
- ▶ VALVES
- ▶ PUMPS
- ▶ GAUGES
- ▶ MANIPULATION

- ▶ MASS FLOW
- ▶ FEEDTHROUGHS
- ▶ CHAMBERS
- ▶ ASSEMBLIES
- ▶ MATERIALS
- ▶ SYSTEMS

# KF Flanges and Components

- Centering Rings

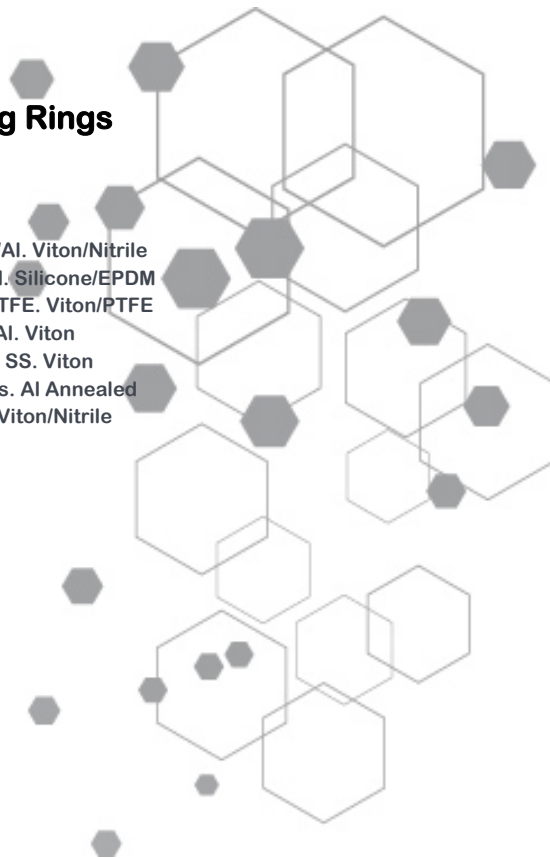


## KF Centering Rings

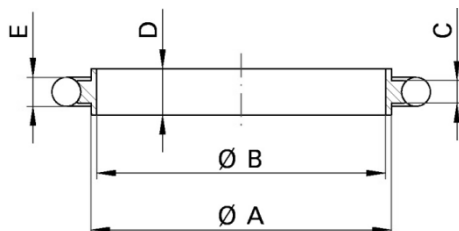
### CONTENTS

Page

B31	Centering Rings. Standard. SS/Al. Viton/Nitrile
B32	Centering Rings. Special. SS/Al. Silicone/EPDM
B33	Centering Rings. Special. SS/PTFE. Viton/PTFE
B34	Centering Rings. Trapped. SS/Al. Viton
B35	Centering Rings. Mesh Screen. SS. Viton
B36	Centering Rings. All Metal Seals. Al Annealed
B37	Centering Rings. Co-Seals. Al. Viton/Nitrile



KF Centering Rings | Standard | SS/Al VITON/NITRILE



- Inner ring materials: SS 304L, Aluminium
- Outer O-ring materials: VITON(Fluorocarbon), Nitrile
- Temperature range: VITON: -15 to 150°C. NITRILE: -20 to 120°C

NW	Inner ring	O-ring	A	B	C	D	E	Part Code
KF16/10 adaptive	SS 304L	VITON	17	16/10	3.9	8	5	KF1610CRVSS
KF10	SS 304L	VITON	12	10	3.9	8	5	KF10CRVSS
KF16	SS 304L	VITON	17	16	3.9	8	5	KF16CRVSS
KF25	SS 304L	VITON	26	23.9	3.9	8	5	KF25CRVSS
KF32	SS 304L	VITON	34	30	3.9	8	5	KF32CRVSS
KF40	SS 304L	VITON	41	39.4	3.9	8	5	KF40CRVSS
KF50	SS 304L	VITON	52	50	3.9	8	5.3	KF50CRVSS

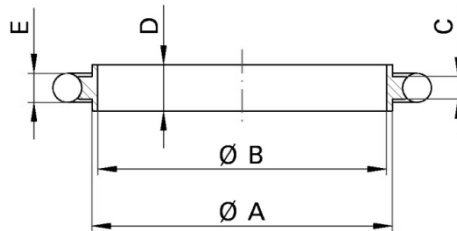
KF16/10 adaptive	SS 304L	NITRILE	17	16/10	3.9	8	5	KF1610CRNSS
KF10	SS 304L	NITRILE	12	10	3.9	8	5	KF10CRNSS
KF16	SS 304L	NITRILE	17	16	3.9	8	5	KF16CRNSS
KF25	SS 304L	NITRILE	26	23.9	3.9	8	5	KF25CRNSS
KF32	SS 304L	NITRILE	34	30	3.9	8	5	KF32CRNSS
KF40	SS 304L	NITRILE	41	39.4	3.9	8	5	KF40CRNSS
KF50	SS 304L	NITRILE	52	50	3.9	8	5.3	KF50CRNSS

KF16/10 adaptive	Al 6061	VITON	17	16/10	3.9	8	5	KF1610CRVAL
KF10	Al 6061	VITON	12	10	3.9	8	5	KF10CRVAL
KF16	Al 6061	VITON	17	16	3.9	8	5	KF16CRVAL
KF25	Al 6061	VITON	26	23.9	3.9	8	5	KF25CRVAL
KF32	Al 6061	VITON	34	30	3.9	8	5	KF32CRVAL
KF40	Al 6061	VITON	41	39.4	3.9	8	5	KF40CRVAL
KF50	Al 6061	VITON	52	50	3.9	8	5.3	KF50CRVAL

KF16/10 adaptive	Al 6061	NITRILE	17	16/10	3.9	8	5	KF1610CRNAL
KF10	Al 6061	NITRILE	12	10	3.9	8	5	KF10CRNAL
KF16	Al 6061	NITRILE	17	16	3.9	8	5	KF16CRNAL
KF25	Al 6061	NITRILE	26	23.9	3.9	8	5	KF25CRNAL
KF32	Al 6061	NITRILE	34	30	3.9	8	5	KF32CRNAL
KF40	Al 6061	NITRILE	41	39.4	3.9	8	5	KF40CRNAL
KF50	Al 6061	NITRILE	52	50	3.9	8	5.3	KF50CRNAL

all dimensions are measured in millimetres (mm) unless otherwise stated

KF Centering Rings | Special | SS/Al SILICONE/EPDM



- Inner ring materials: SS 304L, Aluminium
- Outer O-ring materials: Silicone, EPDM
- Temperature range: SILICONE: -54 to 204°C. EPDM: -57 to 150+°C

NW	Inner ring	O-ring	A	B	C	D	E	Part Code
KF16/10 adaptive	SS 304L	Silicone	17	16/10	3.9	8	5	KF1610CRSSS
KF10	SS 304L	Silicone	12	10	3.9	8	5	KF10CRSSS
KF16	SS 304L	Silicone	17	16	3.9	8	5	KF16CRSSS
KF25	SS 304L	Silicone	26	23.9	3.9	8	5	KF25CRSSS
KF32	SS 304L	Silicone	34	30	3.9	8	5	KF32CRSSS
KF40	SS 304L	Silicone	41	39.4	3.9	8	5	KF40CRSSS
KF50	SS 304L	Silicone	52	50	3.9	8	5	KF50CRSSS

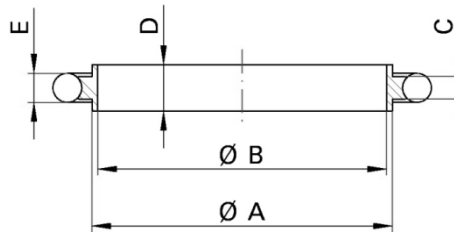
KF16/10 adaptive	SS 304L	EPDM	17	16/10	3.9	8	5	KF1610CRESS
KF10	SS 304L	EPDM	12	10	3.9	8	5	KF10CRESS
KF16	SS 304L	EPDM	17	16	3.9	8	5	KF16CRESS
KF25	SS 304L	EPDM	26	23.9	3.9	8	5	KF25CRESS
KF32	SS 304L	EPDM	34	30	3.9	8	5	KF32CRESS
KF40	SS 304L	EPDM	41	39.4	3.9	8	5	KF40CRESS
KF50	SS 304L	EPDM	52	50	3.9	8	5	KF50CRESS

KF16/10 adaptive	Al 6061	Silicone	17	16/10	3.9	8	5	KF1610CRSAL
KF10	Al 6061	Silicone	12	10	3.9	8	5	KF10CRSAL
KF16	Al 6061	Silicone	17	16	3.9	8	5	KF16CRSAL
KF25	Al 6061	Silicone	26	23.9	3.9	8	5	KF25CRSAL
KF32	Al 6061	Silicone	34	30	3.9	8	5	KF32CRSAL
KF40	Al 6061	Silicone	41	39.4	3.9	8	5	KF40CRSAL
KF50	Al 6061	Silicone	52	50	3.9	8	5	KF50CRSAL

KF16/10 adaptive	Al 6061	EPDM	17	16/10	3.9	8	5	KF1610CREAL
KF10	Al 6061	EPDM	12	10	3.9	8	5	KF10CREAL
KF16	Al 6061	EPDM	17	16	3.9	8	5	KF16CREAL
KF25	Al 6061	EPDM	26	23.9	3.9	8	5	KF25CREAL
KF32	Al 6061	EPDM	34	30	3.9	8	5	KF32CREAL
KF40	Al 6061	EPDM	41	39.4	3.9	8	5	KF40CREAL
KF50	Al 6061	EPDM	52	50	3.9	8	5	KF50CREAL

all dimensions are measured in millimetres (mm) unless otherwise stated

KF Centering Rings | Special | SS/PTFE VITON/PTFE COATED(VITON)



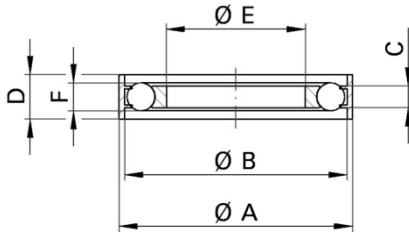
- Inner ring materials: SS 304L, PTFE
- Outer O-ring materials: VITON(Fluorocarbon), PTFE coated(VITON)
- Temperature range: VITON: -15 to 150°C. PTFE: -15 to 150+°C

NW	Inner ring	O-ring	A	B	C	D	E	Part Code
<b>KF16</b>	SS 304L	PTFE coated	17	16	3.9	8	5	<b>KF16CRPTFE</b>
<b>KF25</b>	SS 304L	PTFE coated	26	23.9	3.9	8	5	<b>KF25CRPTFE</b>
<b>KF40</b>	SS 304L	PTFE coated	41	39.4	3.9	8	5	<b>KF40CRPTFE</b>
<b>KF16</b>	PTFE	VITON	17	16	3.9	8	5	<b>KF16CRVPTFE</b>
<b>KF25</b>	PTFE	VITON	26	23.9	3.9	8	5	<b>KF25CRVPTFE</b>
<b>KF40</b>	PTFE	VITON	41	39.4	3.9	8	5	<b>KF40CRVPTFE</b>
<b>KF50</b>	PTFE	VITON	52	50	3.9	8	5.3	<b>KF50CRVPTFE</b>

all dimensions are measured in millimetres (mm) unless otherwise stated



KF Centering Rings | Trapped | SS/Al VITON

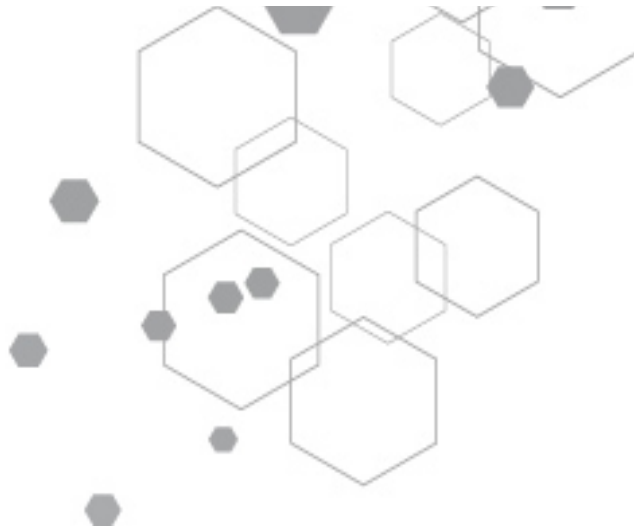


- Inner ring materials: SS 304L
- O-ring materials: VITON(Fluorocarbon)
- Outer ring materials: SS 304L, Aluminium
- Temperature range: VITON: -15 to 150°C

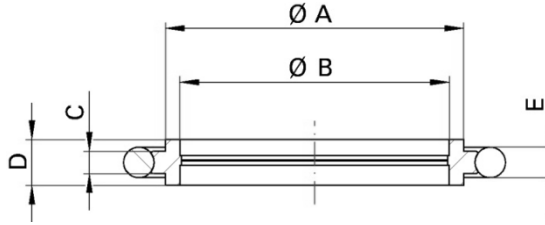
NW	Outer ring	O-ring	A	B	C	D	E	F	Part Code
<b>KF16</b>	SS 304L	VITON	32.5	30	3.9	8	16	5	<b>KF16TCRVSS</b>
<b>KF25</b>	SS 304L	VITON	42	40	3.9	8	25	5	<b>KF25TCRVSS</b>
<b>KF40</b>	SS 304L	VITON	57.5	55	3.9	8	40	5	<b>KF40TCRVSS</b>
<b>KF50</b>	SS 304L	VITON	77.5	75	3.9	8	50	5.3	<b>KF50TCRVSS</b>

<b>KF16</b>	Aluminium	VITON	32.5	16	3.9	8	16	5	<b>KF16TCRVAL</b>
<b>KF25</b>	Aluminium	VITON	42	23.9	3.9	8	25	5	<b>KF25TCRVAL</b>
<b>KF40</b>	Aluminium	VITON	57.5	39.4	3.9	8	40	5	<b>KF40TCRVAL</b>
<b>KF50</b>	Aluminium	VITON	77.5	50	3.9	8	50	5.3	<b>KF50TCRVAL</b>

all dimensions are measured in millimetres (mm) unless otherwise stated



KF Centering Rings | Mesh Screen | SS VITON

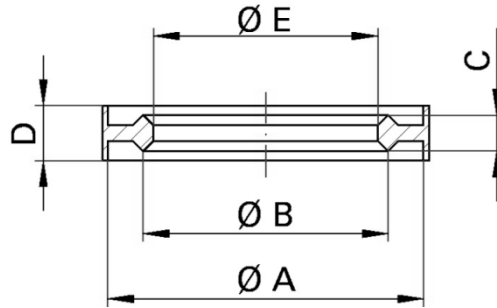


- Inner ring and mesh materials: SS 304L
- O-ring materials: VITON(Fluorocarbon)
- Wire thickness approx. 0.3mm
- Mesh size approx. 1.0mm
- Other wire/mesh sizes available by request
- Temperature range: VITON: -15 to 150°C

NW	Inner ring	O-ring	A	B	C	D	E	Part Code
KF10	SS 304L	VITON	12	10	3.9	8	5	KF10CRVSS-M
KF16	SS 304L	VITON	17	16	3.9	8	5	KF16CRVSS-M
KF25	SS 304L	VITON	26	25	3.9	8	5	KF25CRVSS-M
KF40	SS 304L	VITON	41	40	3.9	8	5	KF40CRVSS-M
KF50	SS 304L	VITON	52	50	3.9	8	5.3	KF50CRVSS-M

all dimensions are measured in millimetres (mm) unless otherwise stated

KF Centering Rings | All Metal Seals | Al



- Ring materials: Aluminium 6082 Annealed
- No gas permeation
- For use with SS flanges
- Temperature range: -196 to 150°C

NW	A	B	C	D	E	Part Code
KF16	30	21	4.5	7	18.5	KF16CRAL
KF25	40	31	4.5	7	28.5	KF25CRAL
KF40	55	46	4.5	7	43.5	KF40CRAL
KF50	75	66	4.5	7	63.5	KF50CRAL

all dimensions are measured in millimetres (mm) unless otherwise stated

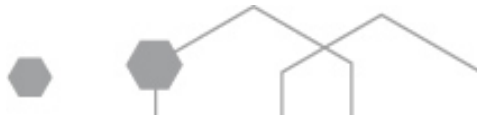


KF Centering Rings | Co-Seals | Al VITON/NITRILE



- Ring materials: Aluminium 6082
- Polymer version available by request
- Temperature range: -196 to 150°C

Viton



NW	OD	Profile	O-ring	Part Code
<b>KF10/16</b>	32	7	3.9	<b>KF16COSVAL</b>
<b>KF25</b>	42	7	3.9	<b>KF25COSVAL</b>
<b>KF40</b>	57	7	3.9	<b>KF40COSVAL</b>
<b>KF50</b>	77.5	7	3.9	<b>KF50COSVAL</b>

all dimensions are measured in millimetres (mm) unless otherwise stated

Nitrile



NW	OD	Profile	O-ring	Part Code
<b>KF10/16</b>	32	7	3.9	<b>KF16COSNAL</b>
<b>KF25</b>	42	7	3.9	<b>KF25COSNAL</b>
<b>KF40</b>	57	7	3.9	<b>KF40COSNAL</b>
<b>KF50</b>	77.5	7	3.9	<b>KF50COSNAL</b>

all dimensions are measured in millimetres (mm) unless otherwise stated



Contact us...



k-tech supplies ltd  
wild thyme  
udimore road  
broadland row  
broad oak  
rye  
east sussex  
tn31 6bx  
united kingdom

web : [www.ktechsupplies.co.uk](http://www.ktechsupplies.co.uk)  
email : [enquiries@ktechsupplies.co.uk](mailto:enquiries@ktechsupplies.co.uk)  
tel : +44 (0)1424 400 235  
fax : +44 (0)7006 044 223